

**Translation of the Original
Operating Manual
ISO CONTROL SK**

ISOBUS Auxiliary Joystick

Item # 560644-0D
Version EN 3.1
August 2022

Corresponds to version DE 3.1

Imprint

All rights reserved
© Copyright by

Reichhardt GmbH Steuerungstechnik
Hofgut Ringelshausen
35410 Hungen / Germany

Phone +49 (0) 6043 - 9645 - 0
Fax +49 (0) 6043 - 9645 - 50
Web www.reichhardt.com
E-mail welcome@reichhardt.com

This manual, even in extracts, may only be reprinted, copied or otherwise reproduced with the express permission of Reichhardt GmbH.

Any type of reproduction, distribution or storage on data storage devices in any form and type which has not been authorized by Reichhardt GmbH constitutes a violation of the applicable national and international copyright and will be prosecuted.

Individual figures may differ slightly from the actual product received. This does not have any effects on the function or operation.

All information, figures and technical data in this publication represent the latest version available at the time of publication. Changes to the product can be made at all times and without prior notice.

Responsible party for the content and layout of this publication: Reichhardt GmbH Steuerungstechnik

Content

1	General Information	1
1.1	Reading and Observing the Manual	1
1.2	Understanding the Manual.....	1
1.3	Understanding Warnings	2
1.4	Warranty and Liability	3
1.5	Service and Repair.....	3
2	For your Safety	5
2.1	Intended Use	5
2.2	Service Personnel Requirements.....	5
2.3	Safety Instructions for Installation and Servicing	6
2.4	Safety Instructions for Electricians	7
2.5	Safety Instructions for Commissioning and Operation	8
2.6	Safety Instructions regarding Disposal	8
3	Product Description	9
4	Components	11
4.1	ISO CONTROL SK Kit (705210-XX).....	11
4.2	Optional Components	12
5	Installation	13
6	Commissioning	15
6.1	Selecting Auxiliary Standard.....	15
6.2	Confirm Assignment.....	16
6.3	Joystick Configurations A-E.....	17
6.4	Levels of the ISO CONTROL Joystick	17
6.5	Overview Reichhardt Joystick Mask.....	18
6.6	Change Mode of Level Switching.....	19
6.7	Change Configuration via the Reichhardt Joystick Mask	21
6.8	Function Assignment of the Configurations A-D via the Auxiliary Editor.....	23
6.9	Change Axis Assignment for Configuration E via the Reichhardt Joystick Mask	25
7	Error Detection	27
8	Work and Storage Conditions	29

1 General Information

This installation manual is intended for service personnel (e.g. agricultural machinery technicians) of agricultural machinery dealers or similar and describes the installation, commissioning and servicing of Reichhardt ISOBUS components for tractors and self-propelled agricultural machinery, etc.

1.1 Reading and Observing the Manual

Please precisely observe and comply with all information and instructions to ensure proper functioning of the Reichhardt ISOBUS components and to prevent personal injury and damage to property. In case of problems in understanding parts of this manual or for other support, please contact Reichhardt.

1.2 Understanding the Manual

Dimensions

The dimensions in this manual correspond to the metric system. Instructions in English language do also consider the imperial system if required.

Directions

The directions “right” and “left” are generally to be understood from the driver seat in the direction of travel.


Figures

The figures shown in this manual only serve for reference. Figures for installation may deviate according to the vehicle model/equipment and the individual installation situation and do not have any influence on the functionality of the system. Software figures may also slightly deviate from actual displays due to different software versions and steering modes.

Language

This manual is possibly available in other languages. For further information, please contact us via phone or e-mail.

1.3 Understanding Warnings

This is a safety alert symbol: 

When you see this symbol on the vehicle or in this manual, be alert to the potential for personal injury. Follow recommended precautions and safe operating practices. Please also note the blue notice signs for correct and damage-free installation/operation.

DANGER

The signal word DANGER is used with the safety alert symbol to identify a hazardous situation that, if not avoided, will result in death or serious injury.

WARNING

The signal word WARNING is used with the safety alert symbol to identify a hazardous situation that, if not avoided, could result in death or serious injury.

CAUTION

The signal word CAUTION is used with the safety alert symbol to identify a hazardous situation that, if not avoided, could result in minor or moderate injury.

NOTICE

The signal word NOTICE indicates important information that, if disregarded, can result in property damage or malfunction of the components or the vehicle. Follow these instructions to ensure long life and proper functionality of the components and the vehicle.

1.4 Warranty and Liability

Warranty or liability obligations apply according to the General Terms and Conditions of Reichhardt GmbH Steuerungstechnik. The General Terms and Conditions can be found at www.reichhardt.com.

Reichhardt does not assume any liability for damage due to a not intended use.

Use of non-approved accessories and spare parts

Exclusively accessories and spare parts approved by Reichhardt may be used for Reichhardt ISOBUS components. These are particularly designed for Reichhardt ISOBUS components and meet high requirements on safety and reliability. Reichhardt particularly points out that accessories or spare parts not approved by Reichhardt must not be used on Reichhardt systems. Otherwise, the safety and function of the system may be compromised. Additionally, personal injury or damage to property may occur due to malfunctions in the system. Reichhardt does not assume any liability for use of non-approved accessories or spare parts.

Unauthorised modifications

If modifications that are not explicitly approved by Reichhardt are carried out at the system, all obligations for warranty as well as any liability by Reichhardt for potential system malfunctions become void. Additionally, the EU Declaration of Conformity (CE mark) or other regulatory approvals may become void. This also applies for removal of factory-applied seals or sealing paint.

1.5 Service and Repair

In case of questions on Reichhardt ISOBUS components and available system extensions or spare parts, please contact your local dealer or directly the manufacturer.

Always report any damage at the product without delay to your responsible dealer or directly to Reichhardt.

2 For your Safety

Please read the safety instructions carefully and completely. They contain important information which is essential for safe installation, commissioning, configuration, maintenance and operation of the Reichhardt ISO-BUS components. Failure to observe the safety instructions can result in personal injury and property damage and result in the loss of any claims for damages.

Besides the given instructions in this manual, please also follow the instructions of any further existing manuals and the regionally applicable regulations for occupational health and safety, accident prevention and road traffic.

2.1 Intended Use

ISOBUS components by Reichhardt are only designed for use on non-public roads controlled by persons working in agriculture and forestry, including special cultures (e.g. vineyard, fruit and vegetable cultivation), gardening and landscaping and municipal technology.

Any other use beyond this is considered improper and is therefore prohibited.

In addition applies

Intended use also includes compliance with the operating conditions prescribed by Reichhardt and the maintenance, service and repair instructions.

Reichhardt will not accept any liability for damage resulting from improper use. Any risks resulting from improper use are solely borne by the user.

The individual components must not come into contact with chemicals such as acids, lye, oils, lubricants or aggressive substances from the petrochemicals sector.

2.2 Service Personnel Requirements

Personnel concerned with installation, commissioning, servicing or temporary operation of Reichhardt ISOBUS components for one of these purposes must fulfil the following minimum requirements:

- They are of legal age
- They are in physical and mental condition to control the vehicle equipped with Reichhardt ISOBUS components.
- They must not be under the influence of medication, alcohol or drugs which may impair their ability to react in any way.
- They have completed the appropriate essential technical vocational training.
- They understand how the vehicle works and may drive it.
- They have read and understood this manual completely, understand how the ISOBUS components work and can carry out work on the vehicle and ISOBUS components safely and can recognize and avoid possible dangers and risks related to the work to be carried out by them.

2.3 Safety Instructions for Installation and Servicing

Installation and servicing require that the sequences are known.

If technically possible, installation and servicing of the Reichhardt ISOBUS components must always be carried out with the vehicle fully at standstill and with the engine switched off. The operator of the vehicle must ensure that the vehicle cannot be started unintentionally or against prior arrangement by unauthorised persons. As necessary, remove the ignition key.

If installation or servicing is required at the running vehicle which is equipped with Reichhardt ISOBUS components, only authorised personnel are allowed to access the danger zone after clear confirmation by the operator. These personnel have to be informed precisely on any potential dangers before entering the danger area. All tasks have to be precisely agreed on in advance by the operator and these personnel.

Always ensure that hands, feet and clothing do not project into the danger area of driven components. Switch off all drive systems and de-pressurise the system at the dedicated operating equipment.

Also comply with the following installation and servicing regulations:

- Keep the workplace clean and dry.
- Do not work in potentially explosive atmospheres.
- Avoid sparking and open flames near the battery. There is a risk of explosion.
- Appropriately use and properly dispose of cleaning agents, substances and materials.
- When operating the vehicle, please be mindful of components which may have become hot.
- Remove any accumulations of lubricating grease, oil or dirt.
- Support the vehicle parts, which must be lifted to carry out installation or maintenance work, in a safe manner.
- Use a ladder or platform to be able to install, remove or maintain components in elevated positions. Make sure that you are standing in a stable and sure position and your hands cannot slip off.
- Do not assemble, disassemble or configure components in elevated positions in wet or icy weather conditions.
- Please consider the safety instructions regarding electrics (see Chapter 2.4).
- Replace any worn or damaged parts.
- Report or repair any damage immediately.
- Always make sure that all parts are in a sound condition and have been installed properly. Electrical cables should not be pulled over sharp edges. This can damage the cables.
- Look out for damaged or incorrectly installed electrical cables. These may cause severe electric shocks.
- Obtain parts to be replaced (screws, hose lines, etc.) only via Reichhardt, to ensure proper function and safety of the vehicle and the ISOBUS components

2.4 Safety Instructions for Electricians

Before any work is to be carried out at the electrical system of the vehicle, the vehicle should be de-energised for safety. Switch off the battery at the main switch. If no switch is available or welding work is to be carried out at the vehicle or any other work near the battery, the battery should be disconnected.

The battery may present a hazard due to electric currents, a short circuit involving high-current intensity, leaking of battery fluid or an explosion. Severe burns may be the result. Always take the battery in and out of operation properly.

When removing and installing the battery, the following precautions must be observed:

- Remove rings, watches and metal objects.
- Use tools with insulated grips and handles.
- Do not place any tools or metal objects on the battery.
- When removing the battery, disconnect the NEGATIVE terminal first and then the POSITIVE terminal (see Fig. 1).
- Place the battery horizontally on a clean surface.
- When installing the battery, fasten it using the provided bracket.
- When installing the battery, connect the POSITIVE terminal first and then the NEGATIVE terminal.
- For additional installations, make sure that there is no contact with other metal objects.

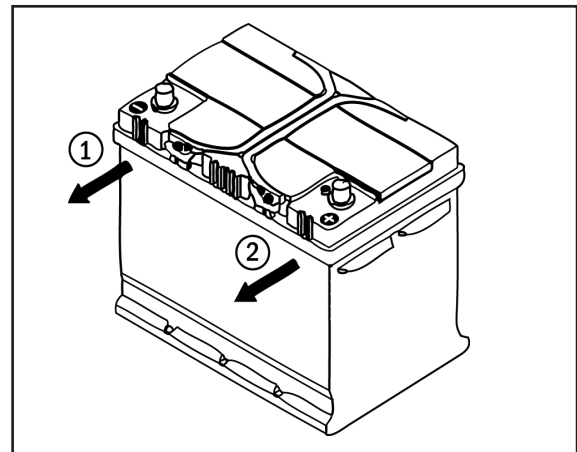


Fig. 1: Disconnecting the battery

2.5 Safety Instructions for Commissioning and Operation

Immediately switch off the Reichhardt ISOBUS components in dangerous situations or drive the vehicle manually to avoid personal injury or material damage.

Watch out for obstacles when using the ISOBUS components in order to prevent damage to the vehicle and other components.

Discontinue operations if it is no longer possible to detect obstacles or persons quickly enough as a result of poor visibility conditions.

To avoid personal injury and material damage during operation, follow the following instructions:

As soon as the vehicle is moving and the ISOBUS components are activated, nobody may remain in the danger zone (see Fig. 2).

The operator is obliged to stop the vehicle immediately as soon as persons enter the danger zone. Persons in the danger zone are exposed to the risk of serious or even fatal injury. Persons might be rolled over by the vehicle if there is a vehicle malfunction. The operator may only start the vehicle and activate the ISOBUS components again if there are no persons in the danger zone.

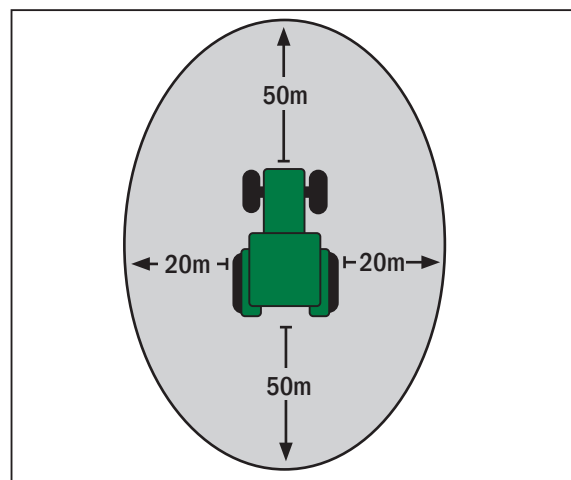


Fig. 2: Danger zone

2.6 Safety Instructions regarding Disposal

For disposal of the Reichhardt ISOBUS components, please observe the following safety regulations:

- Disassemble the ISOBUS components and sort the individual components according to their material structure.
- Please consult the responsible local authority or a dedicated waste management facility on disposal of the individual components. Some components are subject to treatment of hazardous waste.
- Dispose of all components according to applicable regulations.

3 Product Description

The ISO CONTROL joystick is an additional control panel that allows you to control ISOBUS machine functions regardless of the current terminal surface.

The inputs of the joystick can be configured as desired.

The 5 preset configurations (A, B, C, D, E) allow all joystick functions, including axes and analog rocker to be used, even if they are not offered by the implement.

The ISO CONTROL joystick supports Auxiliary Function Type ID 2, 3, 4 and 13.

The joystick has eight buttons on the front panel (see Fig. 3) and three on the back (see Fig. 4 - 1 and 2).

Any number of functions can be assigned to the 8 buttons on the front and the lower button on the back (see Fig. 4 - 2).

The two upper buttons on the back (see Fig. 4 - 1) are used to switch the level. Overall, functions can be assigned on three levels.

The joystick axes can also be assigned individual functions.

The ISO CONTROL joystick has a plastic housing with a stainless steel bracket. Using this and / or the universal bracket, the joystick can be mounted in the driver's cabin.

The joystick is connected via the cable (cable length 1.5 m) to the ISOBUS InCab cab socket.



Fig. 3: Joystick (front side)



Fig. 4: Joystick (back side)

4 Components

To use the ISO CONTROL joystick the following components are needed.

4.1 ISO CONTROL SK Kit (705210-XX)

Quantity	Description	Article number
1	ISO CONTROL SK joystick	703357-XX
1	Angle bracket for ISO CONTROL SK Joystick	310399
1	Universal bracket for ISO CONTROL joystick	310340
8	Round head screw with hexagon socket M5x8 ISO 7380 VA-steel	300679

ISO CONTROL SK Joystick (703357-XX)

The joystick (see Fig. 5) is the operating unit of the system.



Fig. 5: ISO CONTROL SK Joystick

Angle Bracket for ISO CONTROL SK Joystick (310399)

The angle bracket (see Fig. 6) is used to attach the joystick to the *Universal Bracket for ISO CONTROL Joystick* (310340).



Fig. 6: Angle bracket for ISO CONTROL SK Joystick

COMPONENTS

Universal Bracket for ISO CONTROL Joystick (310340)

The universal bracket (see Fig. 7) is used for secure mounting of the ISO CONTROL joystick in the vehicle cabin.



Fig. 7: Universal bracket for ISO CONTROL joystick

8 x Round head screw with hexagon socket M5x8 ISO 7380 VA-steel (300679)

The screws (see Fig. 8) are used to mount the angle bracket and the universal bracket.



Fig. 8: Round head screw with hexagon socket M5x8 ISO 7380 VA-steel (300679) (8x)

4.2 Optional Components

PSR ISO InCab Y-Adapter (702844)

The Y-Adapter (see Fig. 9) is used to connect the joystick and a non-integrated terminal to the ISO-BUS simultaneously, if there is only one InCab socket available in the cabin.



Fig. 9: PSR ISO InCab Y-Adapter

5 Installation

This chapter describes the installation of the individual system components and preparation of the terminal. The installation instructions and pictures may vary slightly depending on the vehicle model, implement and terminal used. The requirements should therefore merely be seen as recommendations.

Mount the ISO CONTROL joystick (see Fig. 10) on the right or left in the driver's immediate area of engagement. The attachment can be made using the universal bracket and angle bracket in different positions.



Fig. 10: Joystick (front and back)

The angle bracket can be mounted in different positions. However, use the side with the red double holes (see Fig. 11) to attach the angle bracket to the joystick. Use the supplied round head screws for fastening.

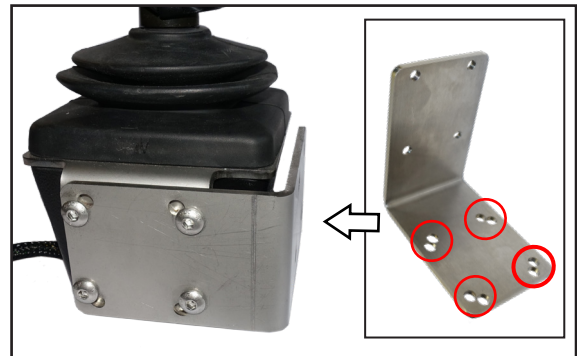


Fig. 11: Joystick with angle bracket

Attach the universal bracket to the other side of the angled bracket, where the threaded holes are located (see Fig. 12). Use the supplied round head screws for fastening.

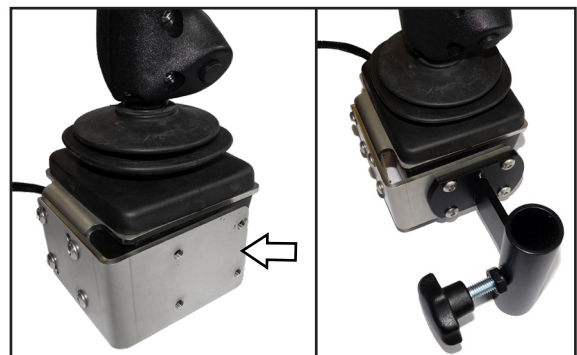


Fig. 12: Joystick without and with universal bracket

INSTALLATION

Connect the ISO CONTROL joystick to the ISOBUS InCab socket (see Fig. 13) in the cabin.



Fig. 13: Connect Joystick in cabin

If the vehicle has a non-integrated ISOBUS terminal which is already connected to the ISOBUS socket, use the optional *PSR ISO InCab Y-Adapter* (702844) (see Fig. 14).



Fig. 14: PSR ISO InCab Y-Adapter

Connect the *PSR ISO InCab Y-Adapter* (702844) with the single InCab plug to the ISOBUS socket (see Fig. 15 – 1).

Connect the other two InCab plugs (see Fig. 15 – 2 and 3) to the terminal and the ISO CONTROL joystick.

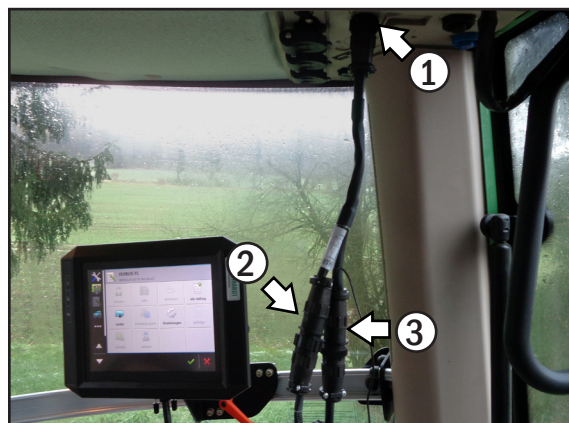


Fig. 15: Connect joystick and terminal with the Y-Adapter in the cabin

6 Commissioning

After completion of the installation, the ISO CONTROL joystick can be taken into operation. Start the terminal.

A *Touch 800 terminal* from Reichhardt was used to display the terminal settings.

6.1 Selecting Auxiliary Standard

Depending on the terminal used, the screen display may be affected. An error message will be displayed at the start of the Reichhardt mask (see Fig. 16). Screens can thus overlap for example.

NOTICE

The joystick masks are optimized for a screen size of 480x480 pixels.

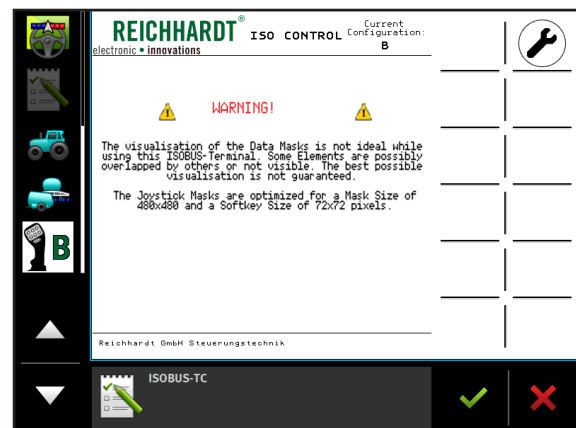


Fig. 16: Warning for mismatch resolution

The joystick is displayed on the left side of the menu (see Fig. 17 - 1).

It may be necessary to switch the AUX standard on the terminal from inactive or AUX 1 to AUX 2 (also AUX-N).

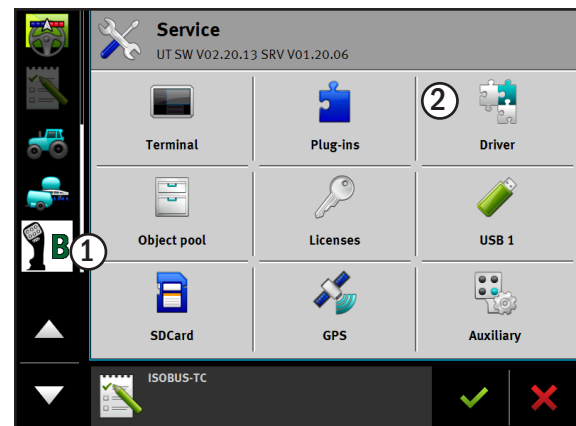


Fig. 17: Start screen: Terminal main menu

Open the drivers menu (see Fig. 17 – 2) and select „Auxiliary“ (see Fig. 18) to get to the settings.

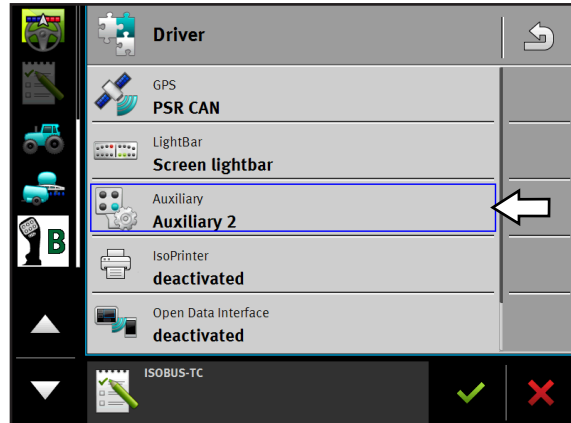


Fig. 18: Drivers menu

The auxiliary standard can now be set (see Fig. 19). This step depends on the type of terminal being used. Refer to the terminals manual for terminal information.

Select the standard „Auxiliary 2“ (see also Fig. 19).

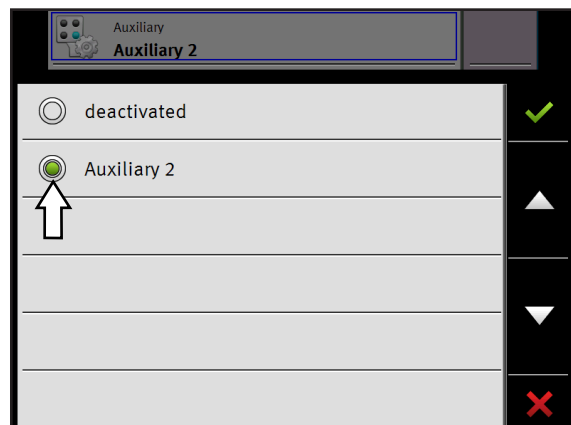


Fig. 19: Set auxiliary standard

6.2 Confirm Assignment

If the ISO CONTROL joystick has already been operated with the used implement and functions assigned, confirmation of these settings will be requested (see Fig. 20). The terminal will load the already assigned functions of the implement and joystick.

If it is the initial start-up, this step is omitted.

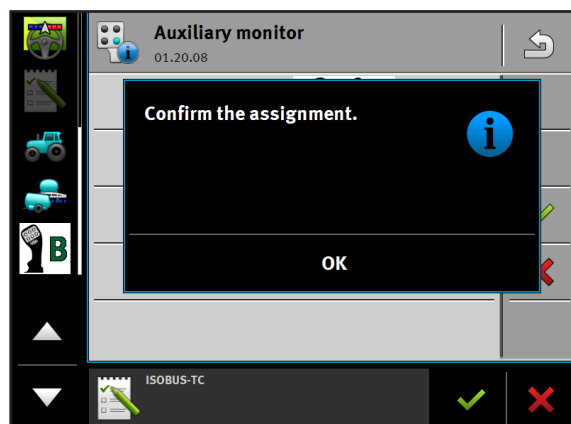







Fig. 20: Confirm assignment

6.3 Joystick Configurations A-E

The ISO CONTROL joystick has five preset configurations (A, B, C, D, E) which make it possible to use the joystick inputs, independent of the functions the implement provides.

The joystick offers more input function assignments than implements currently offer. Check in the instruction manual of the implement which functions are available.

Configuration	ID	Level	Buttons per level	Joystick axes per level
 A	2 13	3	9 x Boolean Non-Latching (Two position switch digital)	1 x Quadrature analog return to 50 % (2D analog value encoder, 0-Point reset)
 B	2	3	9 x Boolean Non-Latching (Two position switch digital)	4 x Boolean Non-Latching (Two position switch digital)
 C	2 3	3	9 x Boolean Non-Latching (two position switch digital)	2 x Analog return to 50 % (Two-way analog value encoder)
 D	2 4	3	9 x Boolean Non-Latching (Two position switch digital)	4 x Analog return to 0 % (Analog value encoder, 0-Point reset)
 E	2	3	8 x Boolean Non-Latching (Two position switch digital)	4 x Boolean Non-Latching (Two position switch digital)

6.4 Levels of the ISO CONTROL Joystick

The joystick has three levels. The eight front buttons, the bottom button on the back and the four axis directions of the joystick can be occupied in all three levels, so up to 39 functions can be assigned.

The two buttons on the back (see Fig. 21) serve only for switching between the three levels.

- 1: level up
- 2: level down

The level change using these buttons can be „non-latching“ or „latching“. Please read Chapter 6.6.

To this two buttons, no function can be assigned.

If you press both buttons at the same time, the Reichhardt Joystick screen will be displayed. This allows faster access, for example while in the mask for the implement.

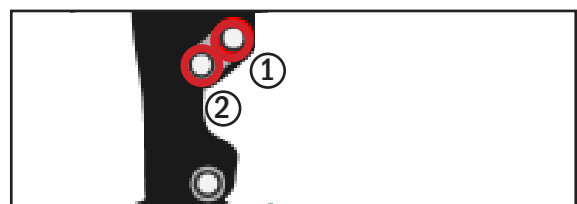


Fig. 21: Switch between levels

6.5 Overview Reichhardt Joystick Mask

In the application overview, the joystick icon is displayed with the selected configuration (see Fig. 22).

Select the joystick icon to open the Reichhardt joystick mask. There, the function assignment of the selected level is shown and the configuration of the joystick can be edited.

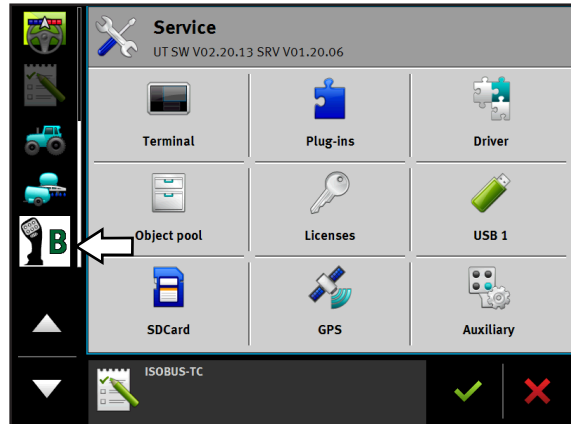


Fig. 22: Joystick icon

In the Reichhardt mask the current configuration (1) of the ISO CONTROL joystick, as well as the possible function assignments for the individual buttons/axes (2a and 2b), are displayed in an overview (see Fig. 23).

The joystick can be assigned different functions for the individual inputs (buttons/axes) on three different levels. These levels are shown on the right side of the screen (see Fig. 23 - 3).

The wrench icon (see Fig. 23 - 4) can be used to change the mode for level switching (see Chapter 6.6) or select a different configuration for the joystick (see Chapter 6.7).

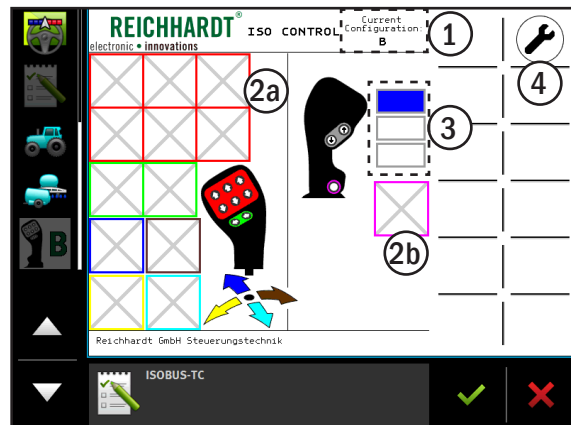


Fig. 23: Reichhardt joystick mask with configuration B

If the ISO CONTROL joystick has already been used with the attached implement, the already assigned function assignments are indicated by an icon (see Fig. 24).

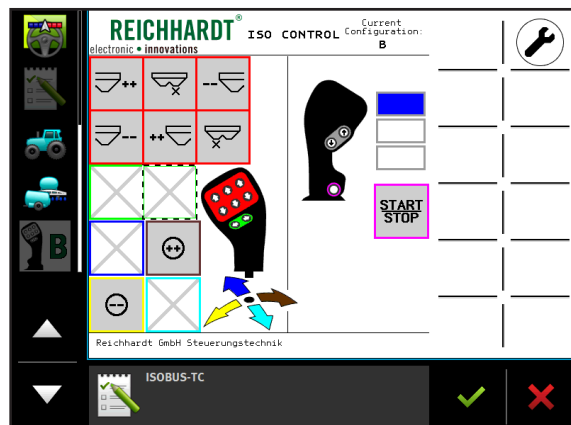


Fig. 24: Joystick with assigned inputs

If an input is assigned more than one function, this is indicated by three strokes in the overview of the joystick mask (see Fig. 25).

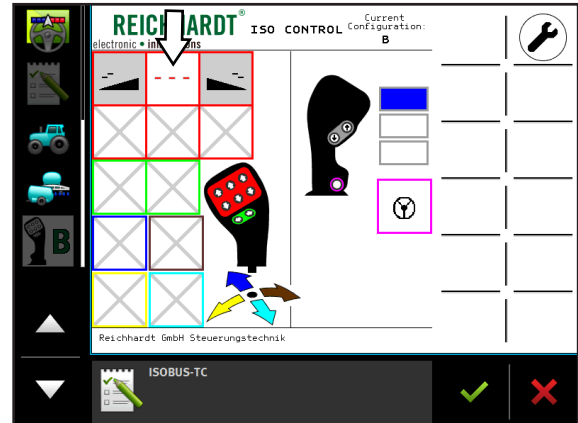


Fig. 25: More than one function on an input

6.6 Change Mode of Level Switching

Select the wrench icon in the upper right corner of the Reichhardt joystick mask (see Fig. 26) to access the joystick settings.

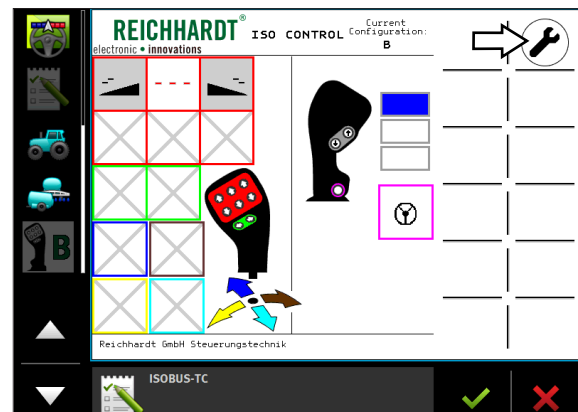


Fig. 26: Call up joystick settings

In the settings press the field behind „Switch levels“ to select between „latching“ and „non-latching“ (see Fig. 27 and Fig. 28).

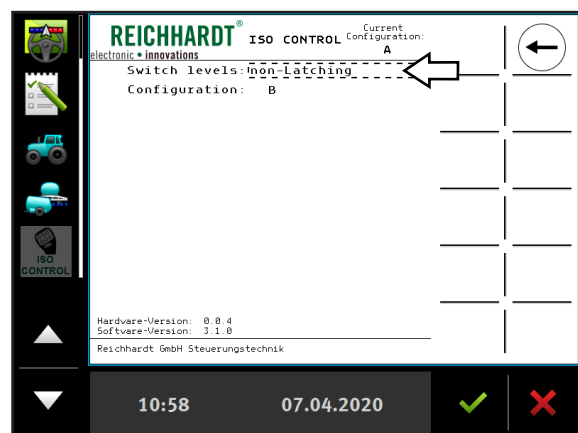


Fig. 27: Call up module settings

Latching:

„Latching“ means, that button 1 is used to move one level up an to remain there, even if the button is no longer pressed (see Fig. 29). By pressing button 2 you can move down one level and stay there after releasing the key.

Non-latching:

„Non-latching“ means that level 2 (yellow) is selected when buttons 1 and 2 are not pressed (see Fig. 29). If button 1 is pressed the system switches to level 1 (blue) and remains there as long as the button is held.

If button 2 is pressed, the system switches to level 3 (red) and remains there as long as the button is held. The same applies by pressing button 2. Pressing it results in switching to level 3 (red) and remaining there as long as button is held.

Confirm the selection with the green check mark. The set mode is immediately active. No restart of the device is required.

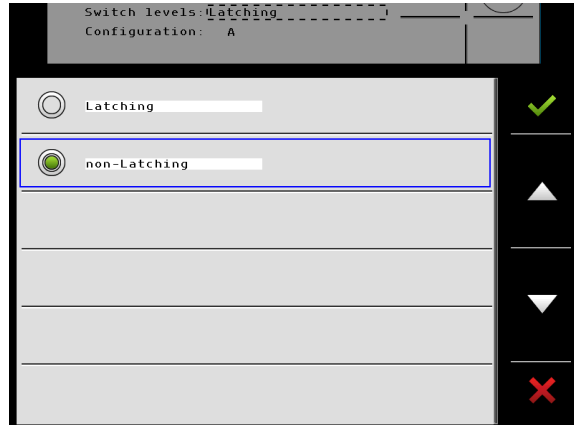


Fig. 28: Select mode

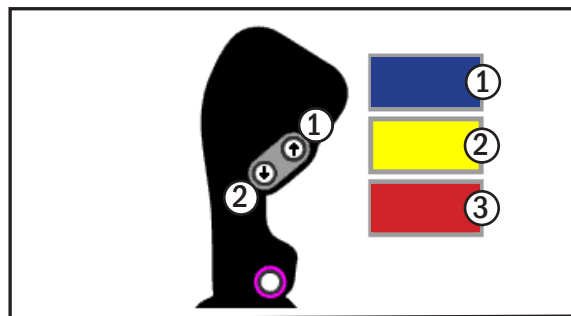


Fig. 29: Overview of level buttons and levels

6.7 Change Configuration via the Reichhardt Joystick Mask

The currently selected configuration is displayed in the head of the Reichhardt mask (see Fig. 30 – 1).

Select the wrench icon (see Fig. 30 – 2) to assign functions (configuration E only) or select another configuration.

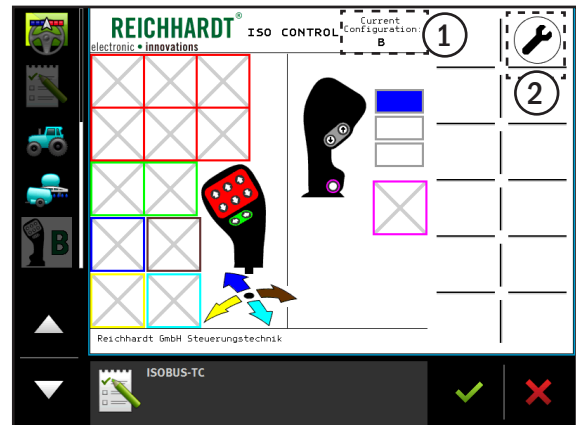


Fig. 30: Enter joystick settings

Enter the configuration selection by tapping on the selection field after „Configuration“ (see Fig. 31).

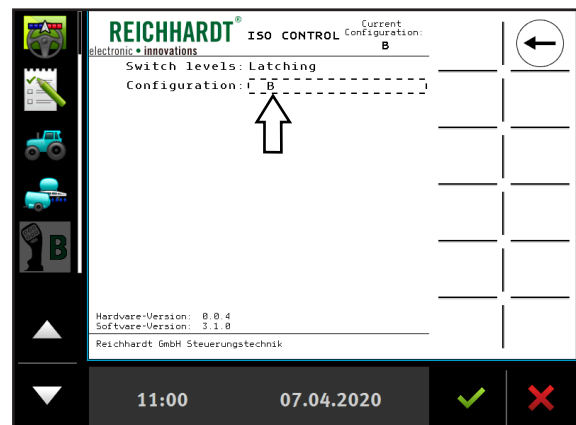


Fig. 31: Enter configuration selection

Switching between the preset configuration is now possible. Confirm the selected configuration with the green check mark (see Fig. 32).

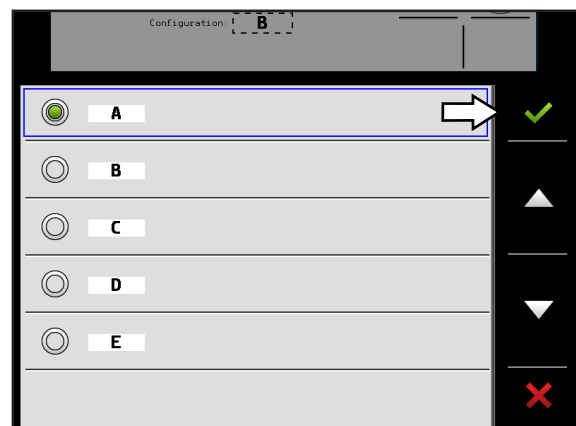


Fig. 32: Select new configuration

COMMISSIONING

To apply the new configuration, select „Load Configuration“. The reduced screen above the load button shows the functions of the newly selected configuration.

The joystick restarts automatically and can be used in the selected configuration. Depending on the terminal used, this process takes about 5 seconds (at initial start-up up to 2 minutes) (see Fig. 33).

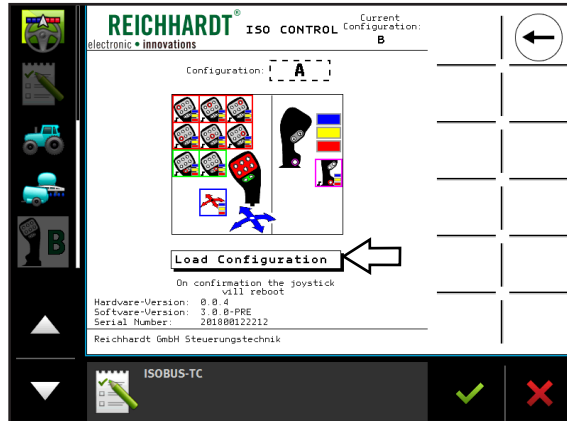


Fig. 33: Confirm new configuration

The selected configuration will then be displayed and is ready for operation (see Fig. 34).

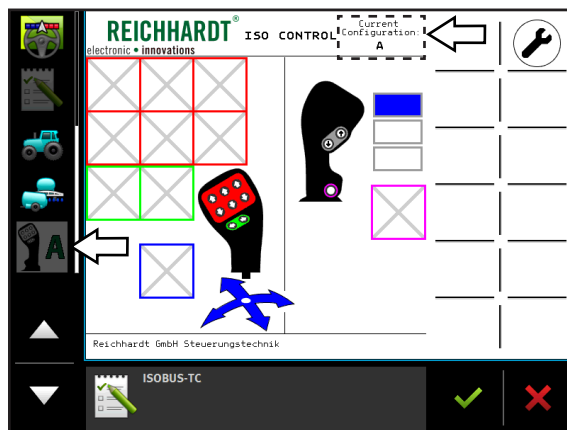


Fig. 34: New configuration loaded

6.8 Function Assignment of the Configurations A-D via the Auxiliary Editor

Once the desired configuration is set, the functions of the ISO CONTROL joystick can be assigned. This is done via the Auxiliary Editor.

From the main menu, select „Auxiliary“ (see Fig. 35) to open the Auxiliary Editor.

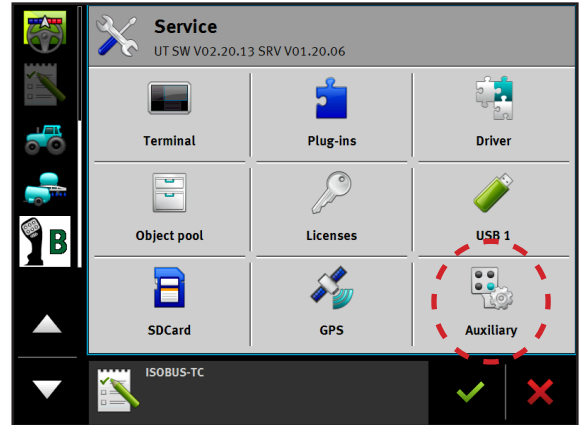


Fig. 35: Terminal main menu

In the Auxiliary Editor, the individual functions of the implement are displayed.

Select an implement function (see Fig. 36).



Fig. 36: Select function of implement

This will open the assignment of inputs. The terminal displays all buttons/axes of the joystick that can control the selected implement function (see Fig. 37).

NOTICE	
When assigning, be sure to use the correct level. The level is indicated by the colored mark to the right of the joystick symbol:	
blue	= level 1
yellow	= level 2
red	= level 3



Fig. 37: Possible inputs

Select the desired input and confirm by tapping the green check mark (see Fig. 38)



Fig. 38: Confirm input

The assignment will be displayed as a link between function and input in the Auxiliary Editor (see Fig. 39).

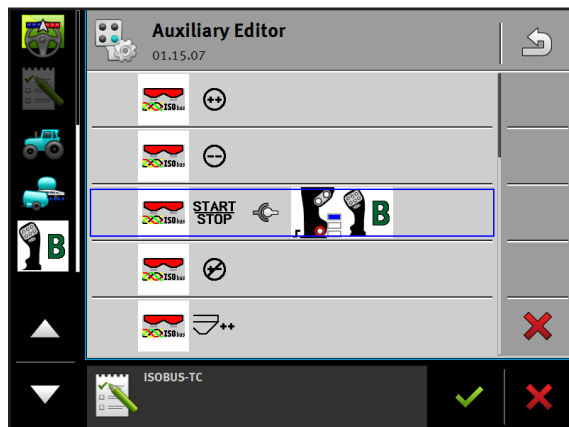


Fig. 39: Assignment in the Auxiliary Editor

In the joystick mask, the function is displayed as an icon in the field of the corresponding button (see Fig. 40).

The Reichhardt mask can be accessed by selecting the joystick icon in the application overview (here on the left of the display).

NOTICE

Please note the use of the correct level in this case as well.

Switch between the levels with the two buttons on the back of the joystick (see Chapter 6.4).

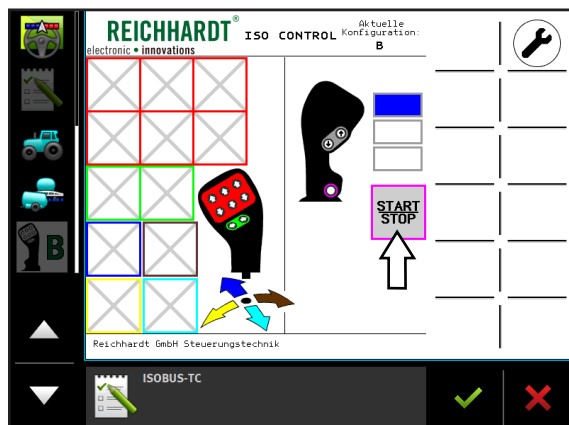


Fig. 40: Assignment in the Reichhardt mask

6.9 Change Axis Assignment for Configuration E via the Reichhardt Joystick Mask

In configuration E, the ISO CONTROL joystick can also control applications that are not ISOBUS-compliant. In three levels 36 functions can be assigned and used.

In configuration E, the function assignments are made automatically by the job computer and are adopted when the configuration is loaded (see Fig. 41 – 1).

The lower button on the back of the joystick can not be assigned a function in configuration E.

However, the joystick axes are freely assignable in all three levels. The unused axes are labeled „No“ (see Fig. 41 – 2).

Select the wrench icon in the Reichhardt joystick mask to access the axis assignment (see Fig. 41– 3).

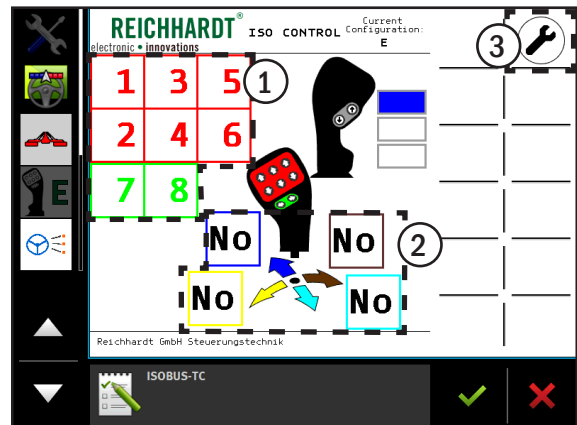


Fig. 41: Joystick mask with configuration E

Open the axis assignment via the axis icon (see Fig. 42).

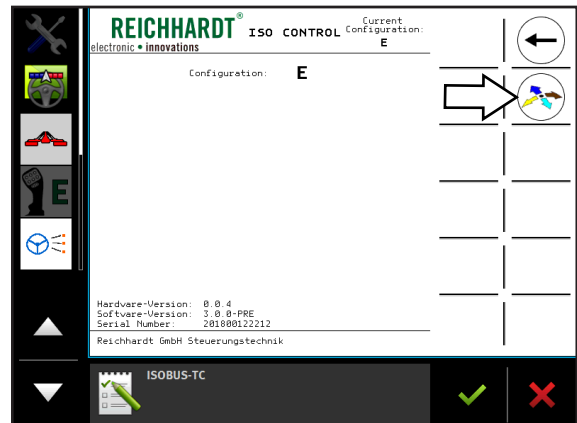


Fig. 42: Open axis assignment

The joystick axes can be occupied optionally in all three levels (see Fig. 43).

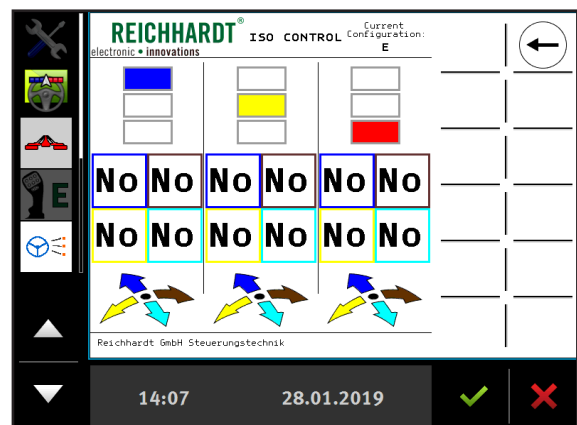


Fig. 43: Overview of the function assignment

COMMISSIONING

Select an axial direction of a level. For example, right axis alignment in level 1 (see Fig. 44).

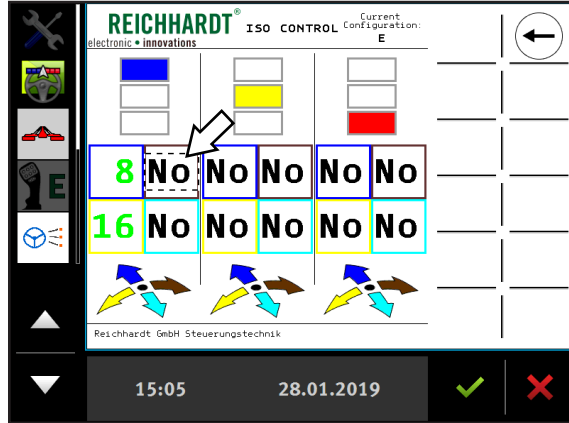


Fig. 44: Assign axial direction with function

Assign the desired function and confirm it with the green check mark (see Fig. 45).

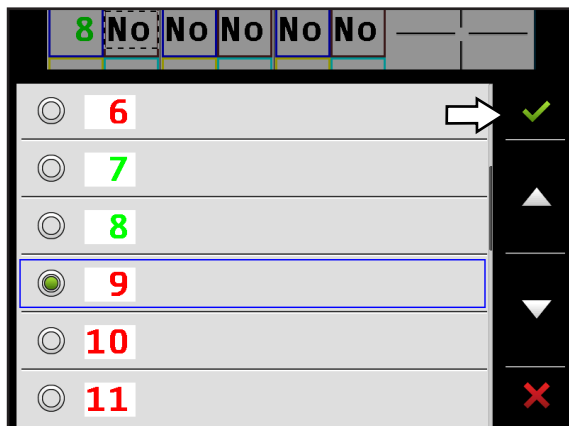


Fig. 45: Select function

The selected function is assigned and displayed in the joystick mask (see Fig. 46).

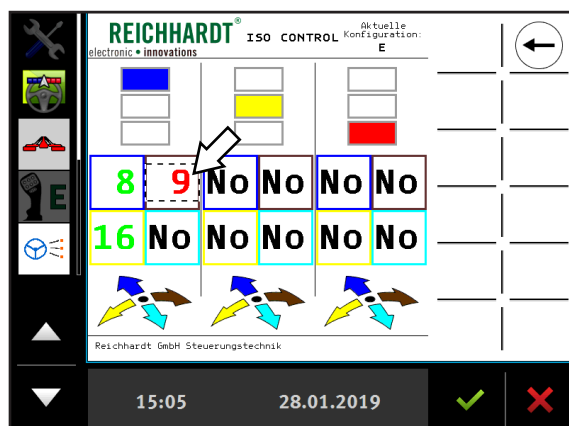


Fig. 46: New assignment is displayed in the joystick mask

7 Error Detection

The ISO CONTROL joystick has an internal error detection. If there is a defect/error, it will be displayed on the terminal.

An error in the software or hardware will be displayed in the Reichhardt mask as a warning with an error code (see Fig. 47).

NOTICE

If the terminal displays an error message, write down the error code and contact the local dealer or Reichhardt.

If the additional error code „ISOLIB“ (see Fig. 48) is displayed in the Reichhardt mask with a warning and error code, this indicates a software error of the ISOBUS driver.

NOTICE

If the terminal displays a software error, write down the error code and contact the local dealer or Reichhardt.

Erroneous assignments can be seen in the overview. These are marked with a warning sign (see Fig. 49). Unmarked assignments function normally.

In addition, the error code in the mask below the overview will be displayed again.

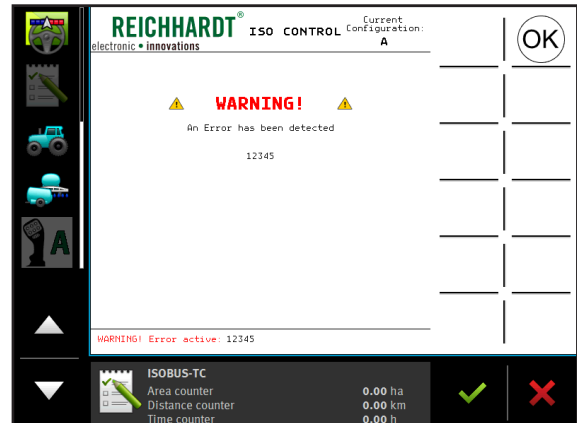


Fig. 47: Warning in case of software and hardware error

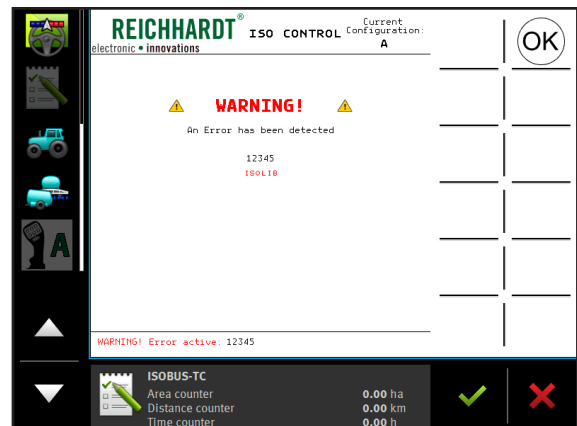


Fig. 48: Warning for software errors of the ISOBUS driver

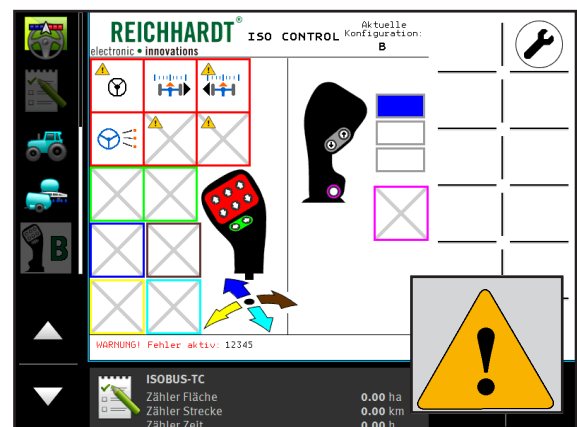


Fig. 49: Overview error display

8 Work and Storage Conditions

The ISO CONTROL joystick is designed for use in agriculture or related fields of application. However, it is provided only for the use inside a vehicle cabin.

NOTICE

Do not clean the ISO CONTROL joystick with water. Only use a damp cleaning cloth.

During the winter, or in the case that the joystick is not mounted in a vehicle, make sure that all parts of the joystick, all cables and screws, as well as necessary accessories, are properly stowed. Avoid humidity and moisture, as well as places with large temperature fluctuations. Doing so can extend the joystick's life span.

