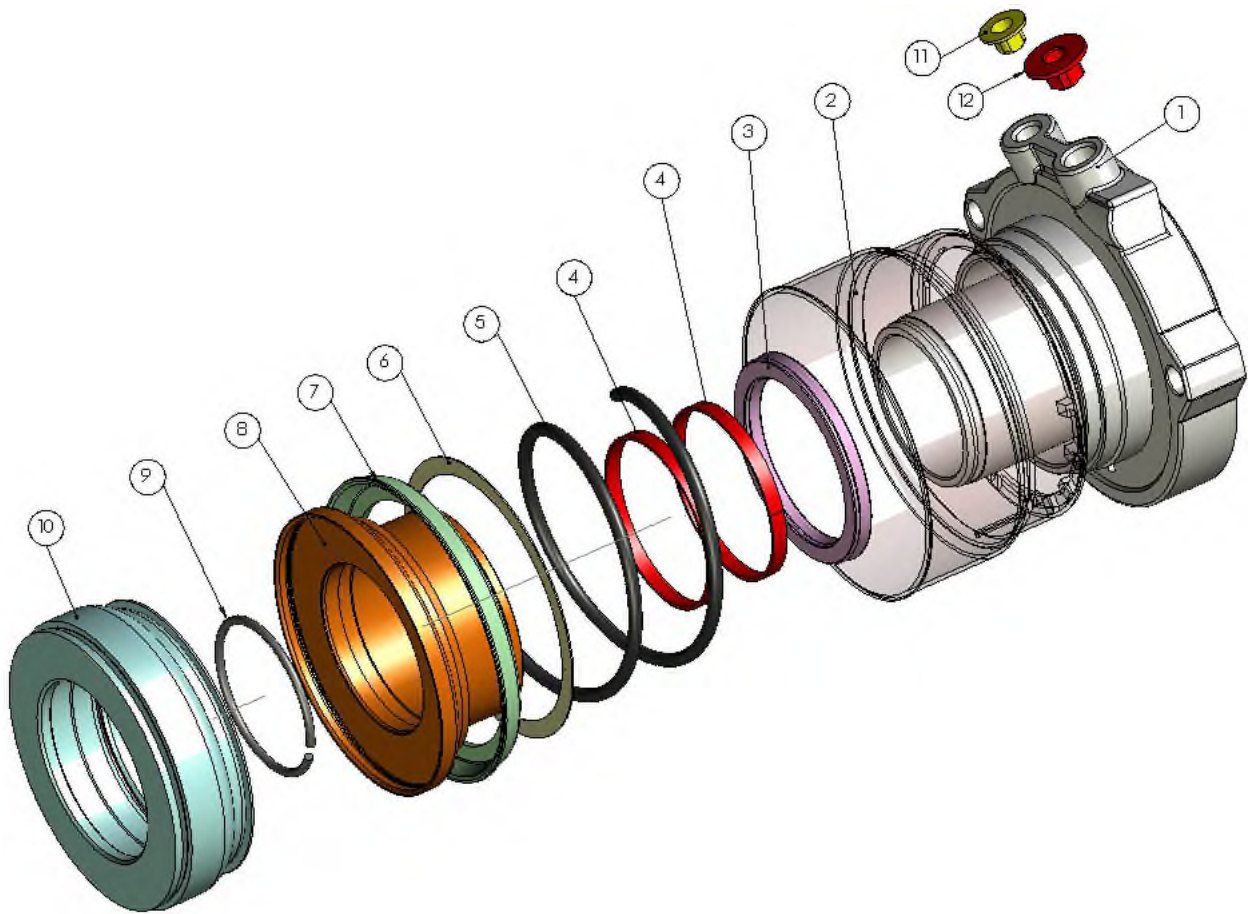


# Sparex

## Concentric Clutch Cylinder Information

PETROLEUM BASED FLUIDS ONLY  
S.72773  
Case IH  
John Deere Combine  
New Holland (Ford & Fiat Agri)

BRAKE FLUID ONLY. DOT3, DOT4, DOT4+, SAE1730  
S.72833  
John Deere Tractor  
Valtra



### IMPORTANT INFORMATION

The CSC concentric clutch cylinder is one unit that combines both the release bearing and slave cylinder into one component. The release bearing is kept in contact with the clutch at all times and self adjusts within the carrier to maintain a central position on the clutch. This minimises wear and is more efficient than other systems.

The fluid type used in these designs is extremely important due to the piston seal (See number 3 on the diagram above). There are different seal types depending on the application and the correct fluid must be used to ensure effective working of the seal.

[www.sparex.com](http://www.sparex.com)

These parts are Sparex parts and are not manufactured by the Original Equipment Manufacturer. Original Manufacturers' names, part numbers and descriptions are quoted for reference purposes only and are not intended to indicate or suggest that our replacement parts are made by the OEM. Images are for illustrative purposes only and may differ from actual product supplied. All products sold in this publication are subject to the terms and conditions of sale available online at [www.sparex.com](http://www.sparex.com).

**Sparex**  
Your 1<sup>st</sup> choice